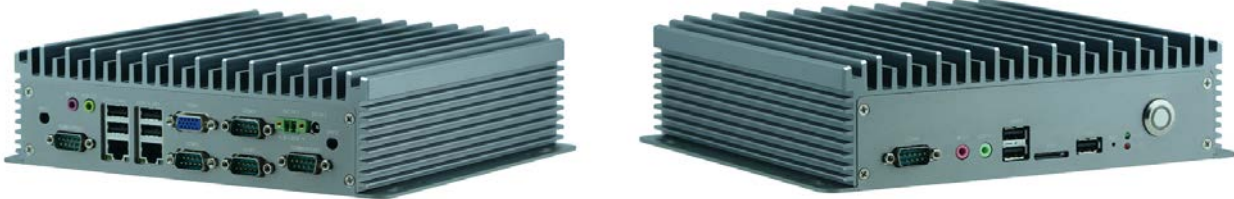


EPC-SK65F

Mini Embedded Industrial PC powered by 6th/7th/8th/9th Intel® Celeron/Pentium/Core™ i3/i5/i7 processor, 4 x COM, 6 x USB



(Pictures for reference only, real product has to be customized)

Feature:

- 2 x RJ45 Gigabit network port
- Support LGA1151 6th/7th/8th/9th Intel® Celeron/Pentium/Core™ i3/i5/i7 processor
- 2 x DDR4 SODIMM memory slot, support 2400/2133MHz memory, maximum support 64GB
- 1 x 2.5 inch HDD bay, transmission speed can reach 6Gbps
- 1 x M.2 slot, support M.2 2260/2280 PCIE x2/SATA standard SSD transmission speed up to 32Gbps
- 1 x MiniPCIE slot, support WIFI module
- 2 x USB3.0, 4 x USB 2.0, 4 x COM, 1 x HDMI port, 1 x VGA port.
- 1 x Line-out (green) interface, 1 x MIC (red) interface
- 1 x DC12~19V power input interface

Specification:

EPC-SK65F

Model No.	EPC-SK65F	
Processor System	CPU	LGA1151 6th/7th/8th/9th Intel® Celeron/Pentium/Core™ i3/i5/i7 processor
	Frequency	Depends on processor
	Core Number	Depends on processor
	Chipset	Intel® H310C Express Chipset
Fanless	Yes	
Memory	Technology	DDR4 2400/2133MHz
	Max. Capacity	64GB
	Socket	2 x 204-pin SODIMM
Graphic	Controller	Intel HD Graphic
	VGA	1920X1200@60HZ
	HDMI	4096X2304@24HZ

Audio	Codec	Realtek ALC662
	Interface	1 x Line-out (green), 1 x MIC (red)
Ethernet	Controller	Intel RTL8111H
	Speed	10/100/100Mbps
	Interface	2 x RJ45
Storage	Type	PCIe X2/SATA
	Installation	1 x M.2 slot
	Type	SATAIII
	Installation	1 x 2.5" HDD/SSD Drive Bay
I/O	Serial Port	4 x RS232 COM, COM2 supports RS485
	Digital I/O	-
	USB 2.0	4
	USB 3.0	2
	Power-On/Reset Button	1 x Power on
	Remote	-
	LED	-
	Antenna Hole	2 x SMA Antenna Holes
Expansion Interface	Mini PCIe	1 x Mini PCIE slot, supports Wi-Fi
	PCI	-
	PCI Express	-
Watchdog Timer		Support hardware reset function (256 levels, 0~255 seconds)
Power	Power Type	Desktop Power Adapter
	Power Supply Voltage	DC 12V~19V
	Connector	DC Jack, 2-pin Terminal Block
	Power Adapter	AC to DC, AC 90 to 240 VAC Input, DC 12V~19V
Environment	Operating Temperature	-10°C~60°C
	Storage Temperature	-20°C~70°C
	Relative Humidity	5%~95%, Non-condensing
	Vibration	IEC 60068-2-64, 0.5Grms, Random 5~500Hz, 40 Mins/Axis
Mechanical	Dimension(W x H x D)	200x62.5x235mm
	Construction	All aluminum and bronze CPU heat sink, Fanless.
	Weight	2.5KG
	Mounting	DIN RAIL
Driver Support	Microsoft Windows	Yes
	Linux	Yes
Certification	EMC	CE,FCC Class B

Ordering Information

NO.	Model	Processor	Chipset	Memory	VGA	HDMI	LVDS	LAN	USB3.0	Power
1	EPC-SK65F	LGA1151	H310C	2 x DDR4 SODIMM	1	1	2ch/24bit	2 x RTL8111H	2	DC 19V

Packing List

1	Power cord 3P 180cm, China
2	Desktop power adapter
3	Driver CD
4	Accessory screw bag

Optional Accessories

1	Power cord 3P 180cm, USA
2	Power cord 3P 180cm, Europe
3	Power cord 3P 180cm, UK
4	Power cord 3P 180cm, Japan
5	Power cord 3P 180cm, India

Contact:

Allen Dai / Sales Manager

Armortec Technology Limited

Email: allen.y.dai@armortec.net

Skype: allen.dai89

Tel: +86 150 1266 9595