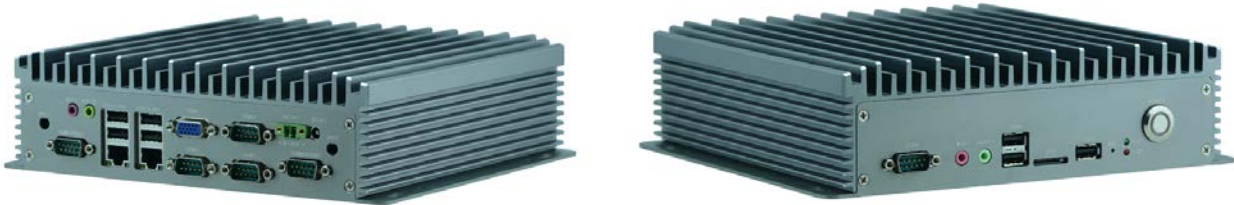


# EPC-NFD359Z

**Small Form Factor Embedded Industrial Computer powered by Celeron J1900 Quad Core, 6 COM, 7 USB sliver color**



## Feature:

Fanless heatsink structure

All aluminum chassis, compact structure and flexible installing

Integrated Intel Celeron J1900 Quad Core Quad Thread Processors

Support WIFI/4G module, providing onboard SIM expansion slot

Supports 1\*VGA

Supports 2 x Intel WGI211AT GbE, Supports Wake-On-LAN, PXE boot

Supports 6 x RS232, COM1/2 supports 5V/12V electricity, COM3-6 supports RS485/RS422

Supports 7 x USB 2.0, 1 x SIM slot

## Specification:

### EPC-NFD359Z

Model No.	EPC-NFD359Z	
Processor System	CPU	Intel Celeron J1900
	Frequency	2.0GHz-2.42GHz
	Core Number	4C
	Chipset	SoC
Fanless		Yes
Memory	Technology	DDR3L 1600/1333MHz
	Max. Capacity	8GB
	Socket	1x 204-pin SODIMM
Graphic	Controller	Intel HD Graphic
	VGA	<u>2560x1600@60HZ</u>
	HDMI	-
Audio	Codec	Realtek ALC662

	Interface	1 x MIC
Ethernet	Controller	2 x Intel WGI211AT, supporting Wake-on-LAN, PXE boot
	Engine	DirectX 11.1, OpenGL 3.2
	Speed	10/100/100Mbps
	Interface	2x RJ45
Storage	Type	SATAII
	Installation	1 x m-SATA Socket, SSD transit rate up to 6Gbps
	Type	SATAII
	Installation	1x 2.5" HDD/SSD Drive Bay
I/O	Serial Port	6x RS232(COM1/2 Supports 5V/12V electricity, COM3-6 supports RS485/RS422), DB9 Male RS485/RS422,RS485/RS422,RS485/RS422,RS485/RS422,RS485/RS422
	Digital I/O	-
	USB 2.0	7x Type A
	USB 3.0	-
	SIM	1 x SIM slot
	Power-On/Reset Button	1x Power On/Off
	Remote	-
	LED	Power/HDD
	Antenna Hole	2x SMA Antenna Holes
Expansion Interface	Mini PCIe	1x Full-sized Socket
	PCI	-
	PCI Express	-
Watchdog Timer		Watchdog Timer 1~255 Level Time Interval System Reset, Software Programmable
Power	Power Type	Desktop Power Adapter
	Power Supply Voltage	9 VDC ~ 36 VDC
	Connector	DC Jack, 2-pin Terminal Block
	Power Adapter	AC to DC, AC 90 to 240 VAC Input, DC 12V/5A 60W or 12V/3A 36W
Environment	Operating Temperature	-10°C~60°C (with Industrial-grade Components)
	Storage Temperature	-20°C~70°C
	Relative Humidity	5%~95%, Non-condensing
	Vibration	IEC 60068-2-64, 0.5Grms, Random 5~500Hz, 40 Mins/Axis
Mechanical	Dimension(W x H x D)	200x62.5x235mm
	Construction	Aluminum + SGCC
	Weight	1.8kg
	Mounting	Wallmount or Desktop
Software	Microsoft Windows	Windows 7, 10
	Linux	Ubuntu, CentOS, etc.
Certification	EMC	CE,FCC Class B

## Ordering Information

Part number	CPU	LAN	COM	USB	Wi-Fi	Power
EPC-NFD359Z	Celeron J1900	2 x 211AT	6	7	Optional	36W/60W external adapter

## Packing List

1	Power cord 3P 180cm, China
2	60W/36W external adapter
3	Driver CD
4	Accessory screw bag

## Optional Accessories

1	Power cord 3P 180cm, USA
2	Power cord 3P 180cm, Europe
3	Power cord 3P 180cm, UK
4	Power cord 3P 180cm, Japan
5	Power cord 3P 180cm, India

### Contact:

Allen Dai / Sales Manager

Armortec Technology Limited

Email: allen.y.dai@armortec.net

Skype: allen.dai89

Tel: +86 150 1266 9595