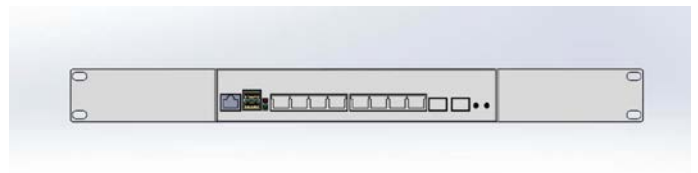
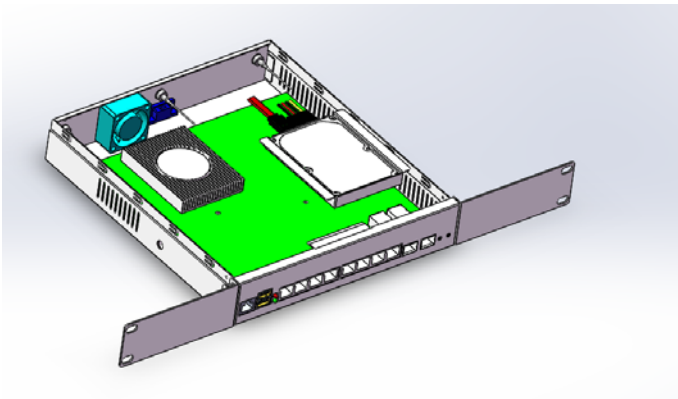


NC-8210

Compact Desktop Network Appliance with 7th Gen Kaby Lake 3865U, Core i3 7100U, Core i5 7200U, Core i7 7500U/ 6th generation Skylake Celeron 3855U, Core i3 6100U, Core i5 6200U, Core i7 6500U processor 8 LAN, 2 SFP



Feature:

Intel® 7th Gen Kaby Lake Celeron 3865U, Core i3 7100U, Core i5 7200U, Core i7 7500U / 6th Gen Skylake Celeron 3855U, Core i3 6100U, Core i5 6200U, Core i7 6500U processor

8 x GbE RJ45, 2 x GbE SFP(Optional), 1 x RJ45 Console Port

Max. 16GB DDR4 2133MHz SO-DIMM

1 x Mini-PCIe Socket (PCIe/USB2.0 Signal)

Mini Desktop Form Factor

2 x USB 3.0 port, 1 x VGA port

Overview:

The NC-8210, powered by the 6th/7th Gen Ultra low power consumption processor, is a desktop form factor network appliance designed for entry-level network security, gateway or vCPE.

Specification:

NC-8210

Model No.	NC-8210	
Form Factor	Desktop	
Platform	Processor Options	Support Intel® 7th Gen Kaby Lake Celeron 3865U, Core i3 7100U, Core i5 7200U, Core i7 7500U / 6th Gen Skylake Celeron 3855U, Core i3 6100U, Core i5 6200U, Core i7 6500U processor
	CPU Socket	BGA1365
	Chipset	SoC
	Security Acceleration	N/A
BIOS	AMI 64Mb Flash ROM	
System Memory	Technology	DDR4 2133MHz
	Max. Capacity	16GB
	Socket	1 x SODIMM Slot
Networking	Ethernet Ports	8 x Intel WG-i211 10/100/1000,

		2 x Intel Ethernet Controller I350-AM2
	Bypass	-
I/O Interface	Reset Button	1 x Reset Button
	LED	Power/Storage
	Power Button	1 x Power Button
	Console	1 x RJ45
	USB	2 x USB3.0
	LCD Module	-
	Display	1 x VGA
	Power Input	Desktop Adapter
Storage	HDD/SSD Support	1 x 2.5HDD/SSD
	Onboard Storage	1 x m-SATA 1 x M.2 2280(Optional 2242), SATA signal only.
Expansion	PCIe	-
	Mini-PCIe	Yes, Supporting Wi-Fi/LTE/Bluetooth
Miscellaneous	Watchdog	Yes
	Internal RTC with Li Battery	Yes
	TPM	-
Cooling	Processor	CPU fan
	System	1 x cooling fans
Environmental Parameters	Temperature	0°C~45°C/-20°C~70°C
	Humidity	0-95% (relative humidity; non-condensing)
System Dimensions	(W x H x D)	
	Weight	
Package Dimensions	(W x H x D)	
	Weight	
Power	Type/Watts	-
	Input	-
Approvals and Compliance		CE, FCC Class B

Ordering Information

Part number	PCH	DDR4	1Gb LAN port	SFP	Console	USB 3.0	2.5" HDD	Mini PCIe Expansion	Power
NC-8210	SoC	1	8 x Intel WG-i211	Intel i350 2 x GbE	1	2	1	1	AC 60W adapter

Packing List

1	2 x Rackmount ear
2	1 x SATA signal cable
3	1 x Screw bag
4	1 x Power cord
5	1 x SATA power cable

Optional Accessories

1	Power cord 3P 180cm, USA
---	--------------------------



www.armortec.net

Professional industrial PC and network appliance designer and manufacturer.

2	Power cord 3P 180cm, Europe
3	Power cord 3P 180cm, UK
4	Power cord 3P 180cm, Japan
5	Power cord 3P 180cm, India

Contact:

Allen Dai / Sales Manager

Armortec Technology Limited

Email: allen.y.dai@armortec.net

Skype: allen.dai89

Tel: +86 150 1266 9595