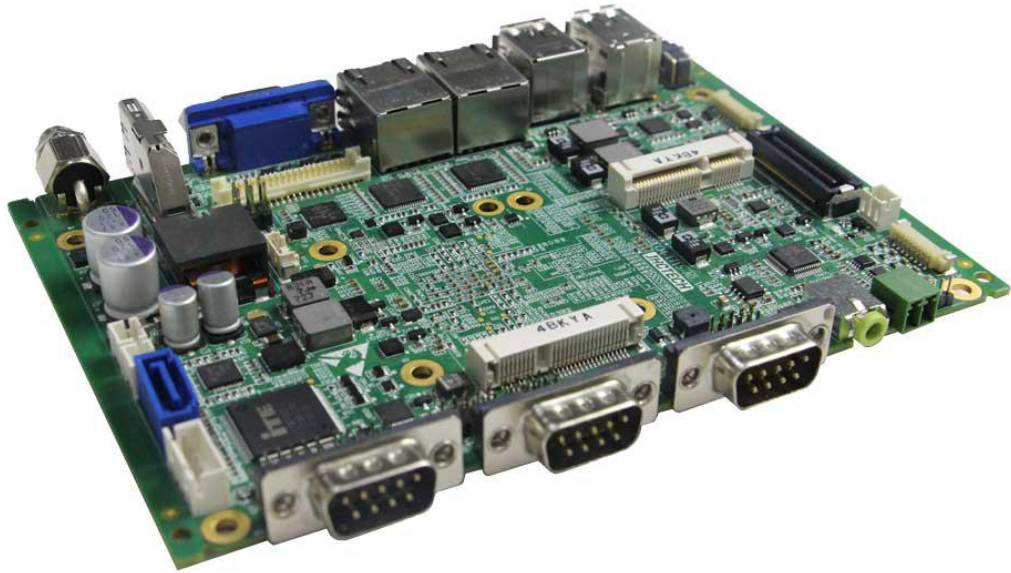
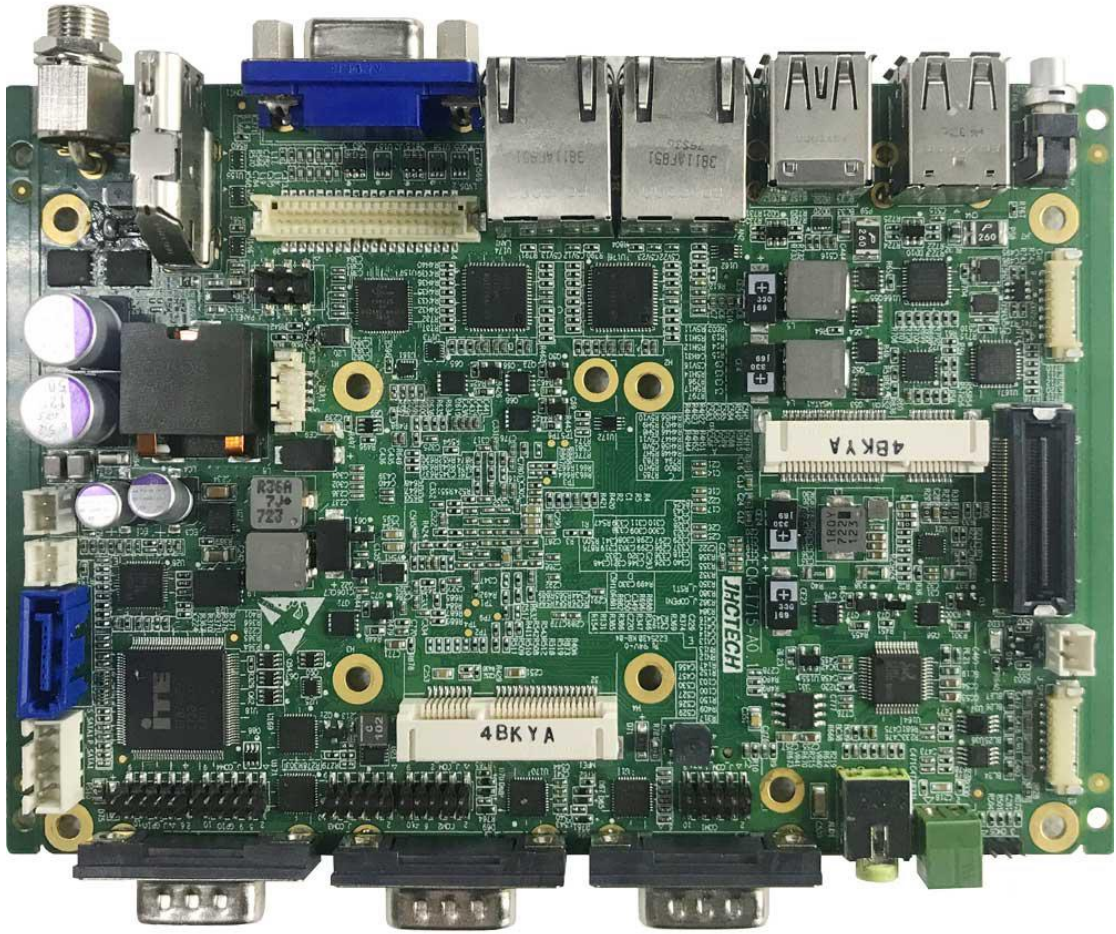


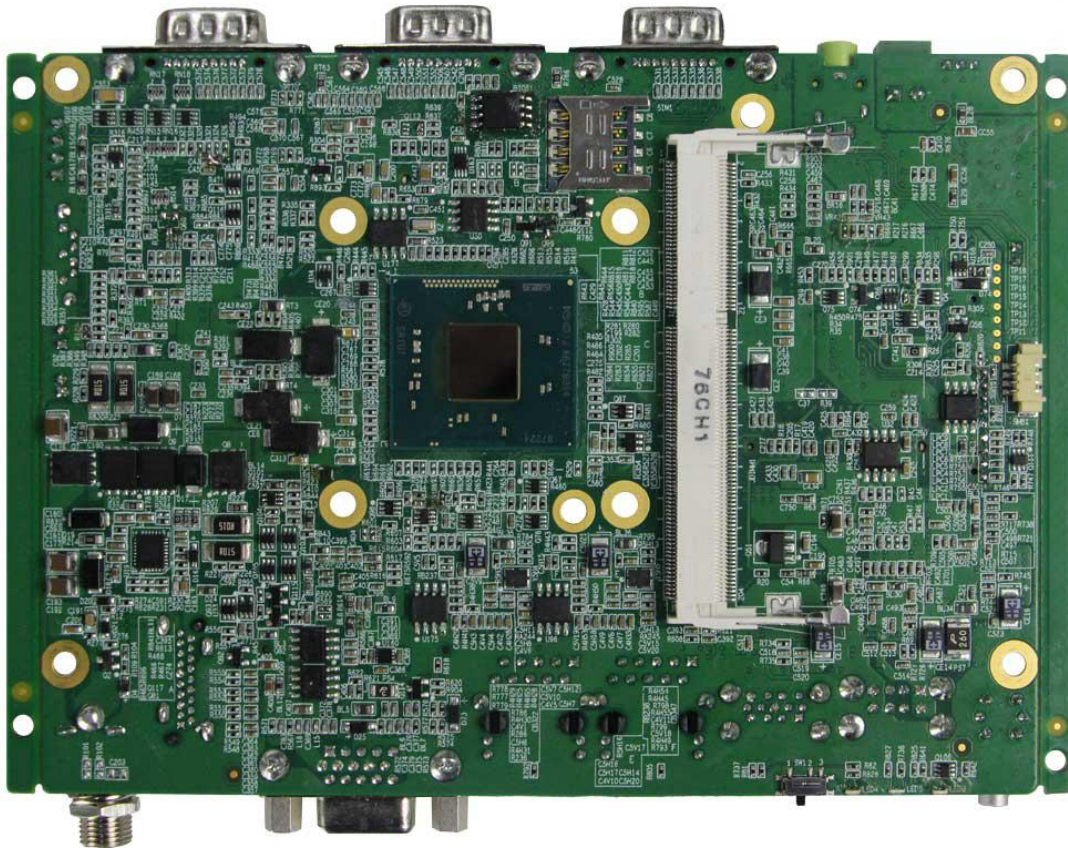
ECM-I715

Embedded Single Board PC, Intel Celeron J1900 CPU, 2\*LAN, 5\*USB, 4\*COMN, three displays, Mini PCIe and EIO, DC-IN 9~36V, CPU Temp. show in LED.









Feature :

1. Intel Baytrail Celeron J1900 2.0-2.42G CPU
2. 1\*DDR3L 1333MHz SODIMM, Up to 8 GB
3. 2\* Intel I211-AT PCIe Gig LAN
4. 1\*HDMI,1\*VGA and 1\*48 bit LVDS
5. 1\*USB 3.0,5\*USB 2.0,4\*COM,8 bit DIO
6. Realtek ALC662VD Audio,2\*3W speak out
7. 1\*Mini PCIe (PClex1+USB), EIO Express bus
8. 1\*SATA 2 3.0 Gbps,1\*mSATA
9. DC9~36wide power input

Specification:

System	CPU	Intel Baytrail-D Celeron J1900,2.0~2.42 GHz,4cores,4threads,2M cache,22nm,TDP 10W
	System Memory	1*DDR3L 1333MHz SODIMM, up to 8GB
	Expansion	1*Full size Mini PCIe with PCIe X1 and USB with SIM slot, support 4G LTE/Wifi/BT etc;

		1*Full size mSATA with USB2.0;1* Express-01 EIO(PCIe,USB 2.0,LPC,SMBus,PS2)
	Graphics	Gen7IntelHDGraphics.TheMax resolution, VGA:1920*1200@60Hz;HDMI:1920*1800@60Hz; 48bit LVDS:1920*1200@60 Hz. Support Open GL 3.2,DirectX 11,Open CL 1.2,MPGE2/H.264
	Ethernet	2*Intel I211-AT PCIe Gigabit Ethernet, Integrated 10/100/1000M
	Audio	Realtek ALC662 VD High Definition Audio, support 5.1 channel
	Keyboard and mouse	USB Keyboard and mouse, optional Ps2 connector (In EIO)
	Storage	1*2.5"HDD SATA2.0 HDD bay, support 3.0Gps HDD/SSD; 1*Full size mSATA, support AHCI
	DIO	8 bit TTL signal, programmable input and output, with 5V DC
	Internal I/O	2*USB 2.0, 2*RS232; 1*48 bit LVDS; 1*SM Bus ; 1*speak out ; 1*80pin EIO
	Rear I/O	2*RJ45 LAN with LED 1*USB3.0 Type and 3*USB2.0 Type A 1*8 bit DIO(DB9,optional 2*5 pin connector ) 2*RS232/422/485COM( DB9,optional 2*5pin connector 1*HDMI and 1*VGA;1*Line-out 3.5mm phone jack 1*2pin connector with power switch signal
	LED	1*Power LED,1*HDD LED,3*CPU temperature level LED (Red for warning, yellow for high, Green for normal )
	Control SW	1*Power button(Front), 1*2pin remoter switch connector,1*AT/ATX optional button
	Power Supply	DC IN 9~36V Input, D-Jack with M8 connector, with short, overvoltage and overcurrent protection.TDP:12V/1.1A(2.5"HDD)
	Watchdog Timer	Watchdog timeout programmable via software 1 to 255 second
	OS Support	Windows 7, Windows 8.1 ,Windows 10,Linux Fedora Ubuntu
Mechanical & Environmental	Dimension	(W*H):146*108 mm
	Operating temperature	0C~60C
	Storage Temperature	-40C~85C
	Storage Humidity	10~90%@40C,non-condensing
	Vibration	5grms/5~500Hz,in operating with SSD; 1grms/5~500Hz in operating with HDD
	Shock	50g peak acceleration(11ms duration) (SSD); 20g peak acceleration ( 11ms

		duration) (HDD)
	EMC	CE/FCC Class A

#### Ordering Info

Model NO.	Introductions
ECM-I715/S001	Embedded Single Board PC, Intel J1900 CPU,2*LAN,1*USB3.0,5*USB 2.0,4*COM,8bit DIO,1*HDMI,1*VGA,1*LVDS, Audio,1*SM Bus,1*Mini PCIe,1*EIO,1*mSATA,1*SATA2, DC9~36V
ECM-I715/T001	Embedded Single Board PC, Intel J1900 CPU,2*LAN,1*USB3.0,5*USB 2.0,4*COM,8bit DIO,1*HDMI,1*VGA, Audio,1*SM Bus,1*Mini PCIe,1*EIO,1*mSATA,1*SATA2, DC9~36V



**Allen Dai**

*Sales Director*

Sales Department, **Armortec Technology Limited**

**p:** +86 755 8935 8465 **m:** +86 15012669595

**a:** 4th Floor, Shenhai Building, Bulong Road, Minzhi Sub-district, Longhua District, Shenzhen, China

**w:** [www.armortec.net](http://www.armortec.net) **e:** [allen.y.dai@armortec.net](mailto:allen.y.dai@armortec.net)