

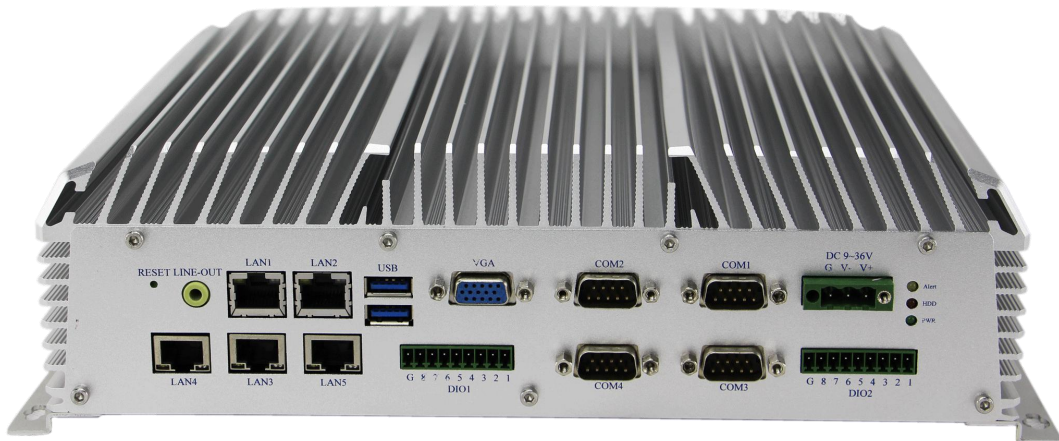
# FEBC-3575

Fanless Embedded Box PC, Aluminum alloy chassis, support 2<sup>nd</sup>/3<sup>rd</sup> generation Intel Core i7/i5/i3 & Celeron mobile processor, 5\*LAN, 16\*bit DIO, mSATA, 4\*COM, 9~36V DC wide voltage input.









Feature :

1. Aluminum alloy chassis, fanless cooling design
2. Core I7/I5/I3 /Celeron (32nm) socket (988B)
3. Intel QM77
4. 2\*DDR3/DDR3L 1333/1600MHz SODIMM, Max 16GB
5. Mini PCIe
6. 5\*Gigabit Ethernet,4\*COM,16bit DIO
7. 2\*USB 3.0,5\*USB 2.0 (one built-in, Audio, mSATA)
8. DC 9~36V wide voltage input
9. Shock& Vibration resistance
10. Support IAMT

Specification:

System	CPU	2 <sup>nd</sup> /3 <sup>rd</sup> generation Intel Core I7/I5/I3 mobile
	System Memory	2*DDR3/DDR3L 1333/1600MHz SODIMM, up to 16GB

	Expansion	1*Mini PCIe card
	Display	VGA
	Ethernet	S001:1*Intel 82579LM1,4*Intel 82574Lnet workchip:10/100/1000 Bas-TX5*RJ45 T001: 1*Intel 82579 LM1,1*Intel 82574L net workchip:10/100/1000 Bas-TX2*RJ-45
	Audio	Line-out
	COM	S001:4*RS232/422/485, T001: 6*RS232/422/485
	Storage	1*Msata,2*2.5" HDD Bay
	DIO	S001: 16 bit DIO; T001: Parallel port
	System control	1*power switch
	Power	DC input: built-in convert(default), Input voltage: 9~36 V AC input: power adapter(option), input voltage :100VAC-240VAC@50~60 Hz
	Optional	WIFI
	LED	2*power light,2*HDD light, 1*Alert
	USB	2*USB 3.0,5*USB 2.0
	LPT	1*LPT, SPP/EPP/ECP mode
	Watchdog	System timer reset/interruption
	OS	Windows 7, Windows XP, Windows XP embedded, Linux
Mechanical & Environmental	Dimension	(W*H*D):248*222.9*81.2 mm
	Operating temperature	-20C~70C-SDD with airflow; -10C~50C-HDD with airflow
	Storage Temperature	-40C~85C(-40F~185F)
	Storage Humidity	5~90%@40C, non-condensing
	Vibration	5grms/5~500Hz/Random/in working status(CFD);1grms/5~500Hz/Random/in working status (HDD)
	Shock	50g peak acceleration(11ms duration) (CFD); 20g peak acceleration ( 11ms duration) (HDD)
	EMC	CE/FCC Class A
	Weight	3.9Kg
	Structure	Aluminum alloy case, wrinkle shape for cooling

	Mounting	desktop
--	----------	---------

#### Ordering Info

Model NO.	Introductions
FEBC-3575S001	Fanless Embedded BoxPC,2 <sup>nd</sup> /3 <sup>rd</sup> generation Intel Core I7/I5/I3 & Celeron processor,5* LAN,4*COM,5*USB 2.0,2*USB 3.0, Audio,16bit DIO
FEBC-3575/T001	Fanless Embedded BoxPC,2 <sup>nd</sup> /3 <sup>rd</sup> generation Intel Core I7/I5/I3 & Celeron processor,2* LAN,6*COM,5*USB 2.0,2*USB 3.0, Audio,1*LPT
PA-12DC19	AC/DC power adapter, DC19V/6.32A 120W
PA-12DC12	AC/DC power adapter, DC12V/10A 120W



#### Allen Dai

*Sales Director*

Sales Department, **Armortec Technology Limited**

**p:** +86 755 8935 8465 **m:** +86 15012669595

**a:** 4th Floor, Shenhai Building, Bulong Road, Minzhi Sub-district, Longhua District, Shenzhen, China

**w:** [www.armortec.net](http://www.armortec.net) **e:** [allen.y.dai@armortec.net](mailto:allen.y.dai@armortec.net)