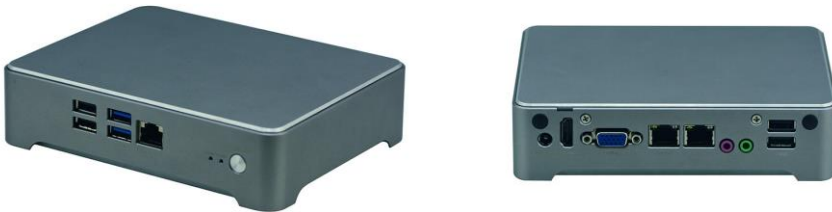


# NUC-35C3Z

Intel Celeron 3855U Skylake Core i3/i5/i7 NUC with HDMI, VGA, Wi-Fi, Dual LAN and Console



## Feature:

- Fanless cooling design
- Al alloy chassis, compact structure, flexible installation
- 1xVGA,1xHDMI, support VGA+HDMI independent dual display
- 2 x Gigabit Ethernet port, supports Wake On LAN
- Rich I/O: 1xDC\_Jack,1xHDMI, 1xVGA, 2xLan, 1xAduio, 6Xusb
- Dimension: 165mmx128mmx41mm

## Specification:

## NUC-35C3Z

Model No.		NUC-35C3Z
Motherboard	Processor	Integrated Intel® Celeron® Processor 3855U 1.6GHz Dual Core processor. Supports Skylake-U Pentium/Celeron/Core i3/Core i5/Core i7 lower power consumption
	Chipset	SoC
Display	Graphic card	Integrated Intel® HD Graphics 510, supporting DirectX 12 OpenGL 4.4, supporting VGA, HDMI sync/async display
Storage	Memory	1* DDR3L SODIMM memory slot, Max. 1600MHz, Max supports 16GB
	SATA	Supports 1* 2.5" HDD/SSD
	CF	N/A
	SSD	1* MSATA slot, supporting MSATA SSD
Sound	Audio chip	Integrated ALC662 6 channel high fidelity audio controller, supporting MIC/Line-out
Network	Ethernet	2* Intel I211-AT GbE NIC controller, supporting Wake-on-LAN and PXE boot
	WIFI	1* Mini-PCIE slot, supporting WIFI/3G module
Front I/O	Console	1* CISCO standard console port
	USB	2* USB2.0 ports, 2*USB3.0 ports
	Power Switch	1* Power Button
	LED	1*HDD LED,1*POWER LED
	LAN	2* RJ45 GbE Ethernet Ports
Rear I/O	Display Connector	1* VGA,1* HDMI

	USB	2*USB 2.0 ports
	Power	1* 12V DC input port
	Antenna	2* WIFI/3G SMA antenna(optional)
	Audio	1* Line-out,1* MIC
Operating System		Supports Windows 7, Windows 8, Windows 10, Linux, etc.
Power Supply	Input	AC 110V~ 220V
	Output	DC 12V/5A
	Type	Desktop Adapters
Chassis	Color	Silver Grey
	Dimension	165mm*128mm*41mm (L*W*H)
	Structure	Fanless structure
	Material	All Aluminum
	Installing Method	Desktop or Wall Mount
Reliability	Working Temperature	0°C ~ 45°C
	Storage Temperature	-20°C ~ 70°C
	Relative Humidity	5%-95% Relative Humidity, non-condensing
	Working Vibration	0.5g rms/5-500HZ/random/operating

## Ordering Information

No.	Product Model	Processor	Motherboard	Memory	HDD	LAN	USB	WIFI	Riser card	OS
1	NUC-61C3Z	3855U/1.6G	STX-N61_C321E	/	/	2*WGI211AT	6	N/A	N/A	/
2	NUC-6163Z(6100U)	6100U/2.3GHz	STX-N61_I321E	/	/	2*WGI211AT	6	N/A	N/A	/
3	NUC-35C3Z	3855U/1.6G	STX-N35_38	/	/	2*WGI211AT	6	N/A	N/A	/

## Packing List

1	Desktop Adapter x 1
2	Power cord 3P 180cm, China x 1
3	VESA bracket x 1
4	Accessory screw bag

## Optional Accessories

1	Power cord 3P 180cm, USA
2	Power cord 3P 180cm, Europe
3	Power cord 3P 180cm, UK
4	Power cord 3P 180cm, Japan
5	Power cord 3P 180cm, India

**Contact:**

Allen Dai / Sales Manager

Armortec Technology Limited

Email: allen.y.dai@armortec.net

Skype: allen.dai89

Tel: +86 150 1266 9595