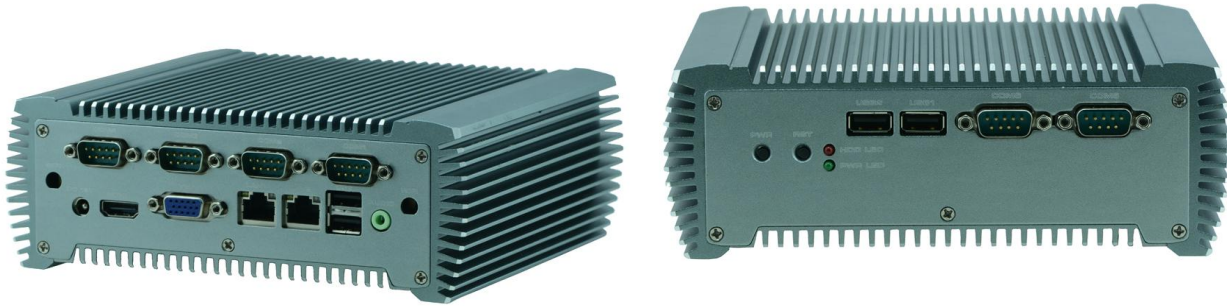


EPC-B263L

Mini Form Factor Embedded Industrial Computer powered by Intel Atom N2600/N2800, 6 COM, 6 USB, Silver Color



Feature:

Fanless heatsink structure

All aluminum chassis, compact structure and flexible installing

Support WIFI/3G module, providing onboard SIM expansion slot

1*VGA/1*HDMI

2*RTL 8111E GbE port, support wake on LAN

I/O Interfaces:6xCOM,1xVGA,2xLan, 1xAudio, 6xUSB,1xHDMI

Specification:

EPC-B263L

Model No.	EPC-B263L	
Processor System	CPU	Intel Atom N2600
	Frequency	1.66GHz
	Core Number	2C
	Chipset	Intel NM10
Fanless		Yes
Memory	Technology	DDR3 1333/1066 MHz
	Max. Capacity	4GB
	Socket	1x 204-pin SODIMM
Graphic	Controller	Intel HD 3600 Graphic
	VGA	1920X1200@60HZ
	HDMI	1920X1200@60HZ
Audio	Codec	Realtek ALC662
	Interface	1x Phone Jack for Line-out
Ethernet	Controller	Realtek RTL8111E
	Speed	10/100/1000Mbps
	Interface	2x RJ45
Storage	Type	SATAII

	Installation	1 x m-SATA Socket
	Type	SATAII
	Installation	1x 2.5" HDD/SSD Drive Bay
I/O	Serial Port	6x RS232(COM2 supports RS485), DB9 Male
	Digital I/O	-
	USB 2.0	6x Type A
	USB 3.0	-
	Power-On/Reset Button	1x Power On/Off, 1x Reset
	Remote	-
	LED	-
	Antenna Hole	2x SMA Antenna Holes
Expansion Interface	Mini PCIe	1x Full-sized Socket with SIM Card Reader(SIM socket available at I/O)
	PCI	-
	PCI Express	-
Watchdog Timer		Watchdog Timer 1~255 Level Time Interval System Reset, Software Programmable
Power	Power Type	Desktop Power Adapter
	Power Supply Voltage	12 VDC
	Connector	DC Jack
	Power Adapter	AC to DC, AC 90 to 240 VAC Input, DC 12VDC /5A 60W
Environment	Operating Temperature	00°C~45°C (with Industrial-grade Components)
	Storage Temperature	-20°C~70°C
	Relative Humidity	5%~95%, Non-condensing
	Vibration	IEC 60068-2-64, 0.5Grms, Random 5~500Hz, 40 Mins/Axis
Mechanical	Dimension(W x H x D)	182x63.5x156mm
	Construction	Aluminum + SGCC
	Weight	1.4kg
	Mounting	Wallmount
Driver Support	Microsoft Windows	Yes
	Linux	Yes
Certification	EMC	CE,FCC Class B

Ordering Information

Part number	CPU	LAN	COM	USB	Wi-Fi	Power
EPC-B263LA	Atom N2600	2 x RTL81111E	6	6	Optional	60W external adapter
EPC-B263LB	Atom N2800	2 x RTL81111E	6	6	Optional	60W external adapter

Packing List

1	Power cord 3P 180cm, China
2	60W external adapter
3	Driver CD
4	Accessory screw bag

Optional Accessories

1	Power cord 3P 180cm, USA
2	Power cord 3P 180cm, Europe
3	Power cord 3P 180cm, UK
4	Power cord 3P 180cm, Japan
5	Power cord 3P 180cm, India

Contact:

Allen Dai / Sales Manager

Armortec Technology Limited

Email: allen.y.dai@armortec.net

Skype: allen.dai89

Tel: +86 150 1266 9595