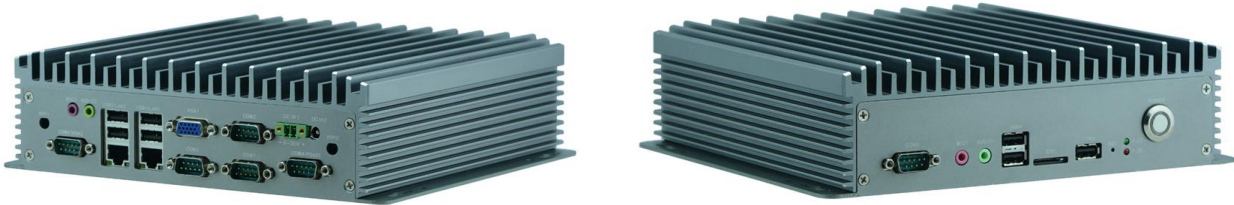


# EPC-NFD35

**Small Form Factor Embedded Industrial Computer powered by Celeron 1037U, 6 COM, 7 USB sliver color**



## Feature:

Fanless heatsink structure

All aluminum chassis, compact structure and flexible installing

Support WIFI/3G module, providing onboard SIM expansion slot

1\*VGA

2 x Intel Gigabit Ethernet port supporting wake on LAN

I/O Interfaces: 1 x 2-pin Terminal Block, 6x COM, 1x VGA, 2x LAN, 1x Audio, 7x USB, 1x POWER

## Specification:

## EPC-NFD35

Model No.	EPC-NFD35	
Processor System	CPU	Intel Celeron 1037U
	Frequency	1.8GHz
	Core Number	2C
	Chipset	Intel NM70
Fanless		Yes
Memory	Technology	DDR3 1600/1333MHz
	Max. Capacity	8GB
	Socket	1x 204-pin SODIMM
Graphic	Controller	Intel HD Graphic
	VGA	<u>1920X1200@60HZ</u>
	HDMI	-
Audio	Codec	Realtek ALC662
	Interface	4x Phone Jack for 2x MIC-in and 2x Line-out
Ethernet	Controller	Intel 82583V
	Speed	10/100/100Mbps
	Interface	2x RJ45

Storage	Type	SATAII
	Installation	1 x m-SATA Socket
	Type	SATAII
	Installation	1x 2.5" HDD/SSD Drive Bay
I/O	Serial Port	6x RS232(COM4 supports RS485), DB9 Male
	Digital I/O	-
	USB 2.0	7x Type A
	USB 3.0	-
	Power-On/Reset Button	1x Power On/Off, 1x Reset
	Remote	-
	LED	Power/HDD
	Antenna Hole	2x SMA Antenna Holes
Expansion Interface	Mini PCIe	1x Full-sized Socket, SIM Card Socket
	PCI	-
	PCI Express	-
Watchdog Timer		Watchdog Timer 1~255 Level Time Interval System Reset, Software Programmable
Power	Power Type	Desktop Power Adapter
	Power Supply Voltage	9 VDC ~ 36 VDC
	Connector	DC Jack, 2-pin Terminal Block
	Power Adapter	AC to DC, AC 90 to 240 VAC Input, DC 12VDC /5A 60W
Environment	Operating Temperature	0°C~45°C (with Industrial-grade Components)
	Storage Temperature	-20°C~70°C
	Relative Humidity	5%~95%, Non-condensing
	Vibration	IEC 60068-2-64, 0.5Grms, Random 5~500Hz, 40 Mins/Axis
Mechanical	Dimension(W x H x D)	200x62.5x235mm
	Construction	Aluminum + SGCC
	Weight	1.8kg
	Mounting	Wallmount
Driver Support	Microsoft Windows	Yes
	Linux	Yes
Certification	EMC	CE,FCC Class B

## Ordering Information

Part number	CPU	LAN	COM	USB	Wi-Fi	Power
EPC-NFD35A	Celeron 1037U	2 x 82583V	6	7	Optional	60W external adapter
EPC-NFD35B	Core i3 3217U	2 x 82583V	6	7	Optional	60W external adapter
EPC-NFD35C	Core i5 3317U	2 x 82583V	6	7	Optional	60W external adapter

## Packing List

1	Power cord 3P 180cm, China
2	60W external adapter
3	Driver CD
4	Accessory screw bag

## Optional Accessories

1	Power cord 3P 180cm, USA
2	Power cord 3P 180cm, Europe
3	Power cord 3P 180cm, UK
4	Power cord 3P 180cm, Japan
5	Power cord 3P 180cm, India

### Contact:

Allen Dai / Sales Manager

Armortec Technology Limited

Email: allen.y.dai@armortec.net

Skype: allen.dai89

Tel: +86 150 1266 9595